

SEASONS°

Live in the heart of Mount Barker



Whittaker
Release

rivergum
homes



An enviable location.

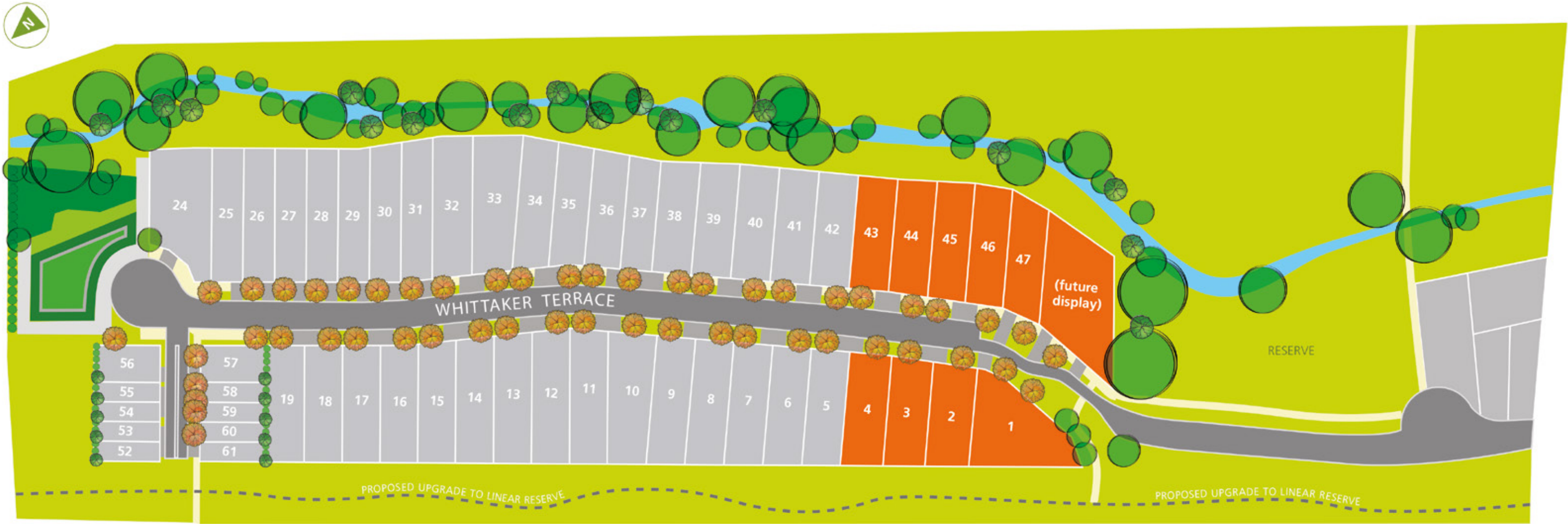
Perfectly positioned within walking distance to IGA Fresh, childcare, primary school and healthcare and so close to the secondary school, major sports hub, park and a 10 minute walk to the vibrant Mount Barker town centre via the linear Mt Barker trail, a home here is connected to everything you need. There is no closer, connected new development in Mt Barker.



Seasons brings together all the convenience and vibrancy of town centre living, whilst being its own haven of tranquillity and natural beauty. Hallmarked by a majestic rivergum, a large adjoining nature reserve and a meandering creek, as well as the Heritage Steam Ranger Railway, this is where wide-open space and landscaped gardens flourish and a sense of community thrives. This is true Hills living without compromise.



Whittaker Release



RELEASED

Simply beautiful homes.

Seasons is fully planned to ensure beautiful streetscapes, with every home complementing the quality of this prestigious new address. Choose from a range of all-inclusive, fixed price house and land packages to suit your lifestyle – single and double storey Torrens Title and terrace homes – quality built by Rivergum Homes and backed by a 50 year structural warranty.

At Seasons, every home will have its own architectural character, yet form a vital part of the neighbourhood flavour and include fencing and landscaping for a flat and usable yard.

All homes are turn-key and fixed price. All dwellings include:

- 2.7m ceilings
- Front and rear landscaping
- Led lighting
- Side and rear fencing
- Westinghouse appliances
- Ducted air-conditioning

Nothing left to do, but move in.



About Rivergum Homes

Rivergum Homes is an industry leading building company renowned for exceptional quality and value. We are committed to delivering outstanding homes that reflect how Australians live today and want to live tomorrow.

Rivergum Homes was awarded Builder of the Year in 2018 at the HIA Awards.



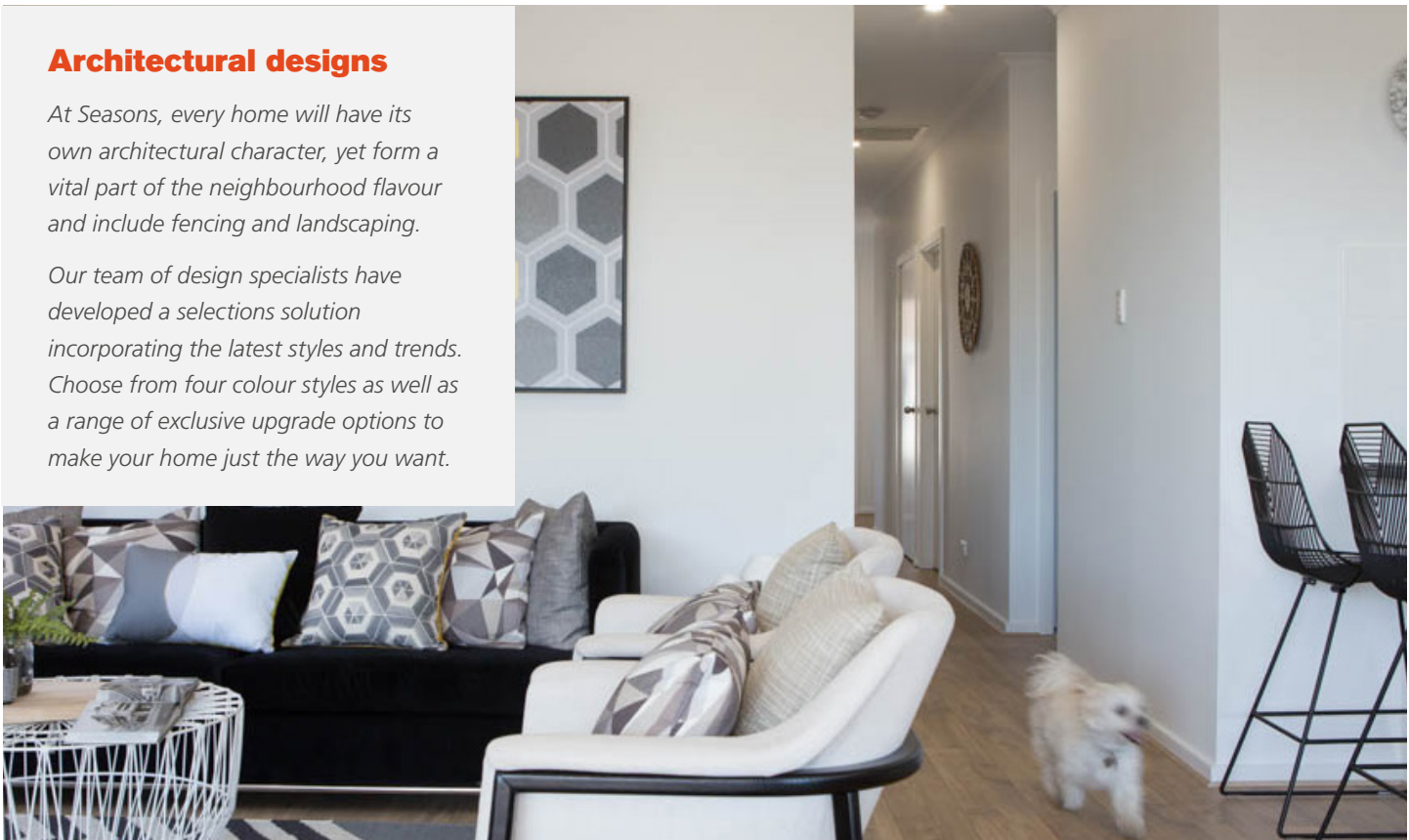
Fixed price.
Full turn key.



Architectural designs

At Seasons, every home will have its own architectural character, yet form a vital part of the neighbourhood flavour and include fencing and landscaping.

Our team of design specialists have developed a selections solution incorporating the latest styles and trends. Choose from four colour styles as well as a range of exclusive upgrade options to make your home just the way you want.



Our Vision

Season's is the urban tree change, offering well considered urban planning and custom house designs positioned in the iconic South Australian country town of Mount Barker. The house types will suit first home owners through to empty nesters, designed as single or two level homes with two to four bedroom options. Season's aesthetic is based upon the relaxed rural setting with stone cladding and natural tones, accentuated with the pop of urban colour.

Quality guarantee

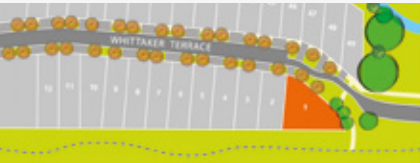
All Rivergum homes come with a peace-of-mind 50 year warranty. This warranty is your assurance of quality.



Lot 1 Halo

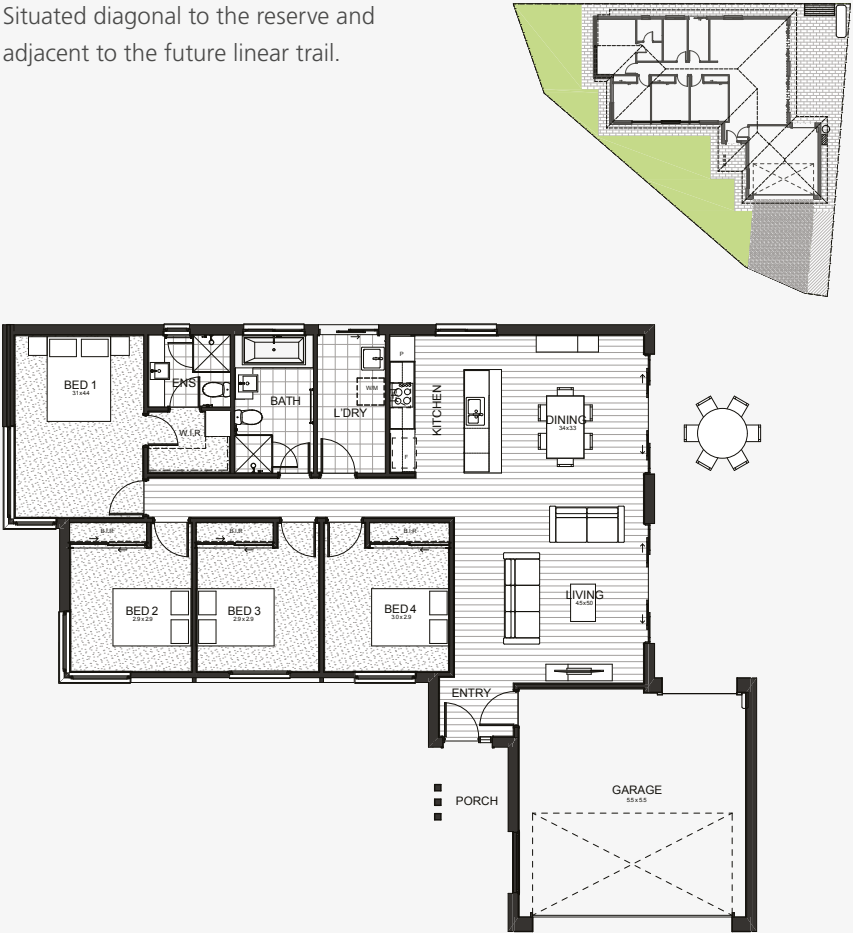


First impressions last, and as the most spacious home on the largest allotment - the Halo is designed to make a statement. Featuring a double garage, 4 bedrooms, and turnkey inclusions such as Westinghouse appliances, stone benchtops and ducted reverse cycle air conditioning, there is no more impressive way to start a new life in Mount Barker than with the Halo.



AREA	MEASUREMENT (M ²)
LIVING	134.14
PORCH	3.65
GARAGE	35.41
TOTAL AREA	173.20
LAND SIZE	401.00

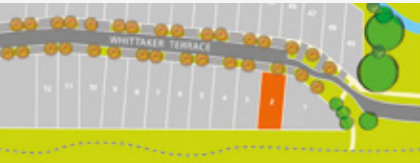
Situated diagonal to the reserve and adjacent to the future linear trail.



Lot 2 Cadent

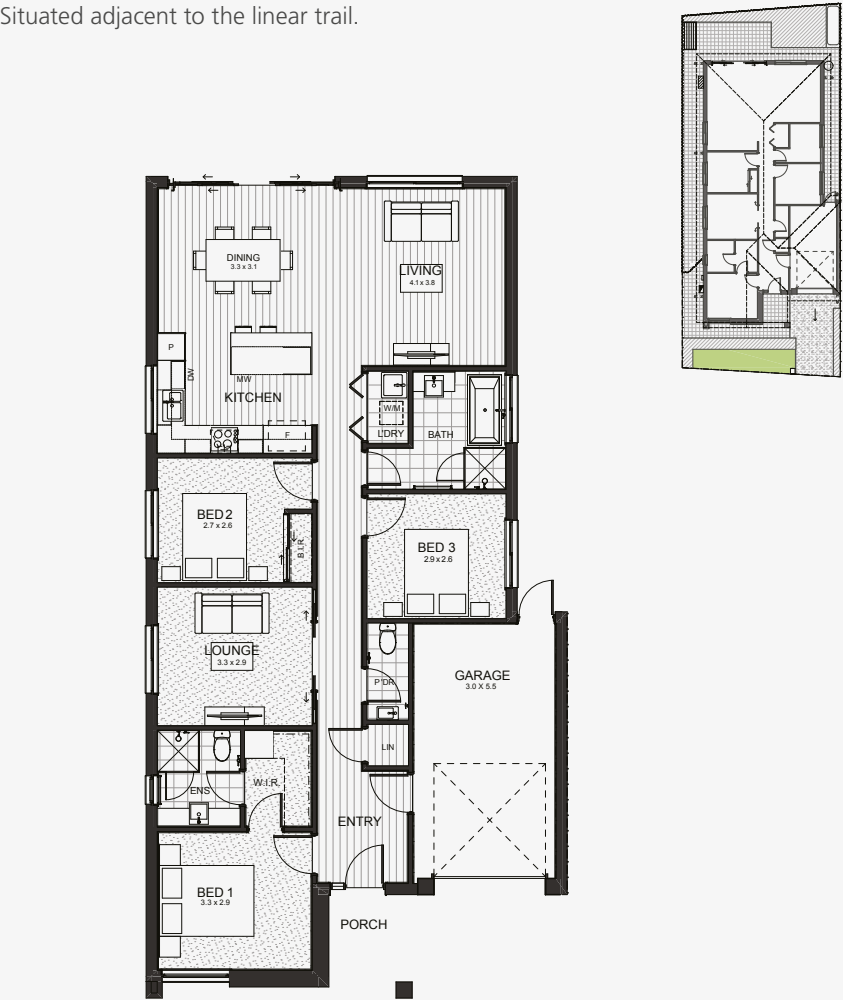


When life changes, the Cadent can grow with you. Cleverly designed with flexibility in mind, the Cadent has the ability to convert from a 3-bedroom home with two lounge areas, to a 4-bedroom home for a growing family. As an all-inclusive turnkey package, there is no more flexible way to start a new life in Mount Barker than with the Cadent.



AREA	MEASUREMENT (M ²)
LIVING	118.83
PORCH	4.87
GARAGE	19.87
TOTAL AREA	143.57
LAND SIZE	253.00

Situated adjacent to the linear trail.



Lot 3 Halo



When life changes, the Cadent can grow with you. Cleverly designed with flexibility in mind, the Cadent has the ability to convert from a 3-bedroom home with two lounge areas, to a 4-bedroom home for a growing family.

As an all-inclusive turnkey package, there is no more flexible way to start a new life in Mount Barker than with the Cadent.



**3**

**2**

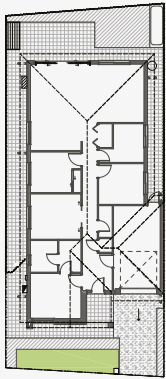
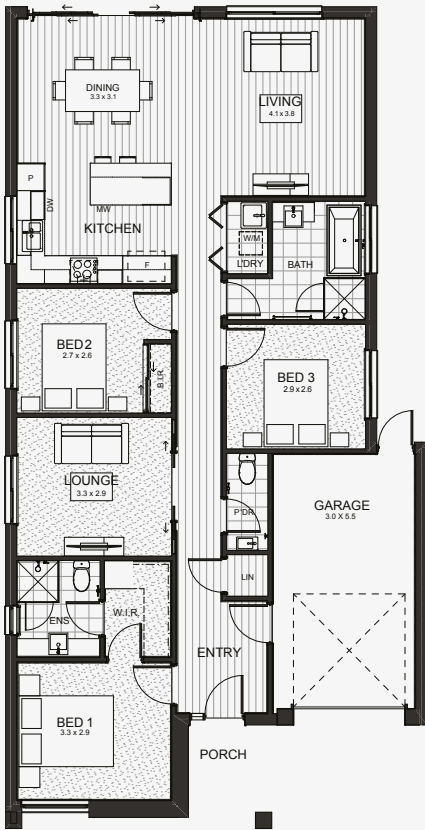
**2**

**1**

**1**

AREA	MEASUREMENT (M ²)
LIVING	118.83
PORCH	4.87
GARAGE	19.87
TOTAL AREA	143.57
LAND SIZE	253.00

Situated adjacent to the linear trail.

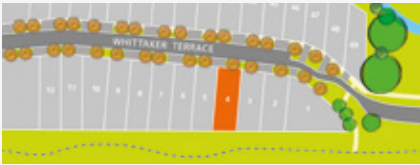


Lot 4 Amber



Architecturally designed to be compact yet spacious, the Amber offers fantastic value for first home buyers.

A bright, airy open plan living area and 3 bedrooms with ensuite and walk-in robe to main, in a full turnkey package make the Amber a smart and rewarding way to start a new life at Seasons, Mount Barker.



**3**

**2**

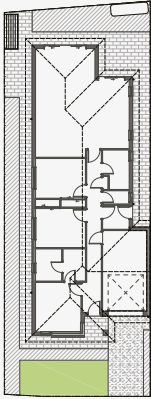
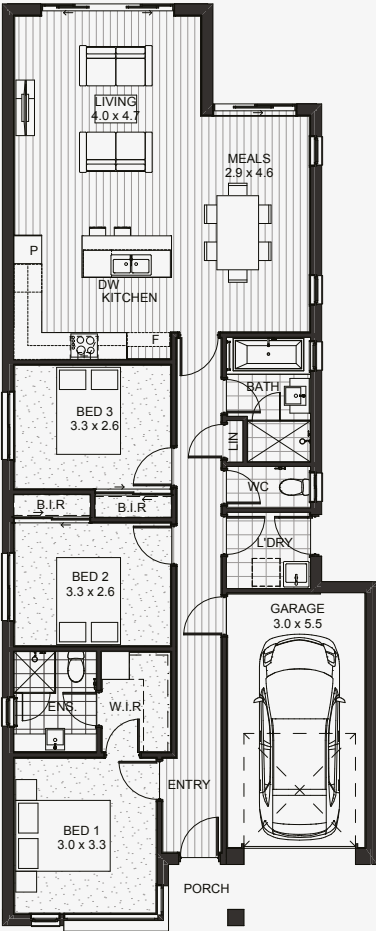
**1**

**1**

**1**

AREA	MEASUREMENT (M ²)
LIVING	116.11
PORCH	2.35
GARAGE	19.42
TOTAL AREA	137.88
LAND SIZE	266.00

Situated adjacent to the linear trail.

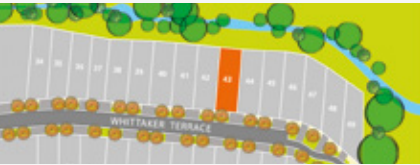


Lot 43 Juliette



Cleverly utilising space and layout, the Juliette offers fantastic value for first home buyers and young families.

This fixed price turnkey package makes it easy to own your own home. 3 bedrooms, including ensuite and walk-in robe to main, 2.7m high ceilings and premium inclusions, make the Juliette a light and airy, contemporary home.



- 3
- 2
- 1
- 1
- 1

AREA	MEASUREMENT (M²)
LIVING	115.84
PORCH	10.13
GARAGE	19.42
TOTAL AREA	145.39
LAND SIZE	256.00



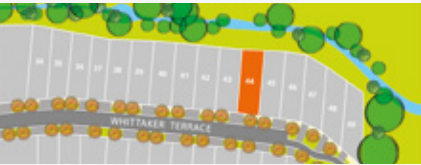
Situated by the local waterway.

Lot 44 Amber



Architecturally designed to be compact yet spacious, the Amber offers fantastic value for first home buyers.

A bright, airy open plan living area and 3 bedrooms with ensuite and walk-in robe to main, in a full turnkey package make the Amber a smart and rewarding way to start a new life at Seasons, Mount Barker.



- 3
- 2
- 1
- 1
- 1

AREA	MEASUREMENT (M²)
LIVING	115.84
PORCH	10.13
GARAGE	19.42
TOTAL AREA	145.39
LAND SIZE	256.00



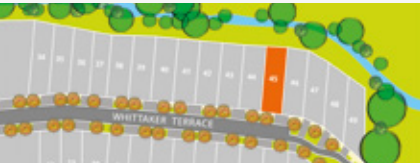
Situated by the local waterway, backing on to Council reserve.

Lot 45 Amber



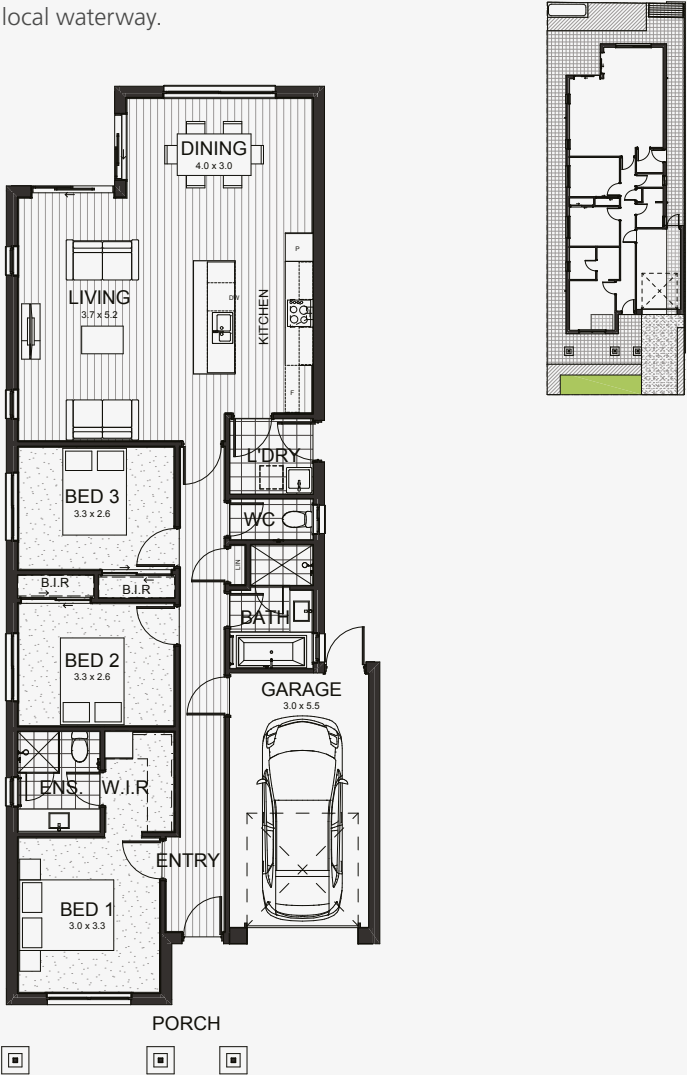
Cleverly utilising space and layout, the Juliette offers fantastic value for first home buyers and young families.

This fixed price turnkey package makes it easy to own your own home. 3 bedrooms, including ensuite and walk-in robe to main, 2.7m high ceilings and premium inclusions, make the Juliette a light and airy, contemporary home.



AREA	MEASUREMENT (M ²)
LIVING	115.84
PORCH	10.13
GARAGE	19.42
TOTAL AREA	145.39
LAND SIZE	256.00

Situated by the local waterway.



Lot 46 Amber



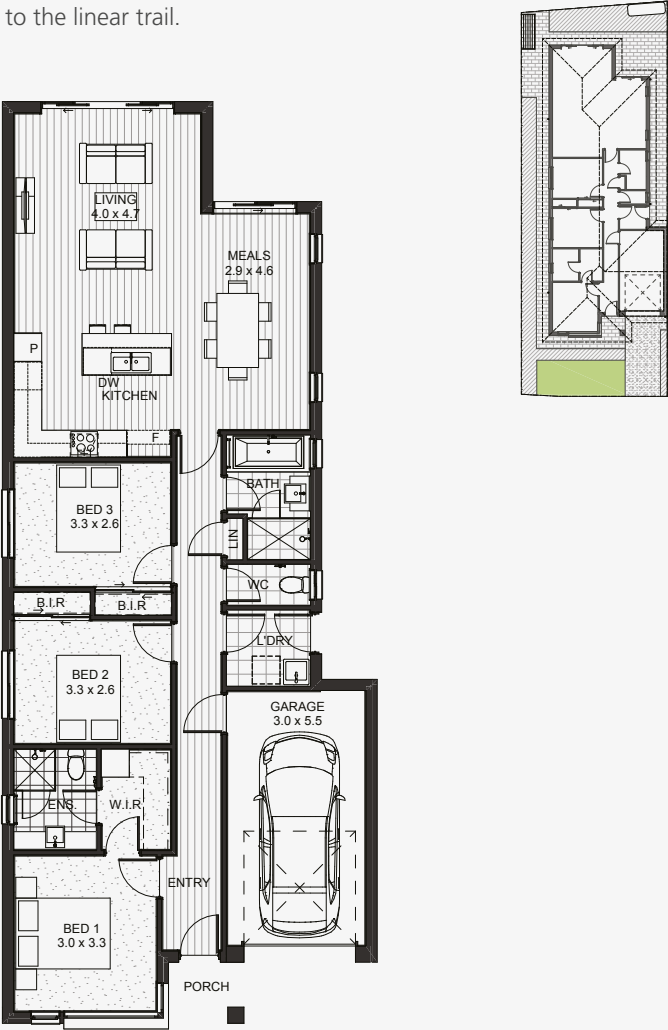
Architecturally designed to be compact yet spacious, the Amber offers fantastic value for first home buyers.

A bright, airy open plan living area and 3 bedrooms with ensuite and walk-in robe to main, in a full turnkey package make the Amber a smart and rewarding way to start a new life at Seasons, Mount Barker.



AREA	MEASUREMENT (M ²)
LIVING	116.11
PORCH	2.35
GARAGE	19.42
TOTAL AREA	137.88
LAND SIZE	266.00

Situated adjacent to the linear trail.



Lot 47 Amber



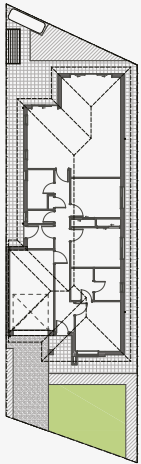
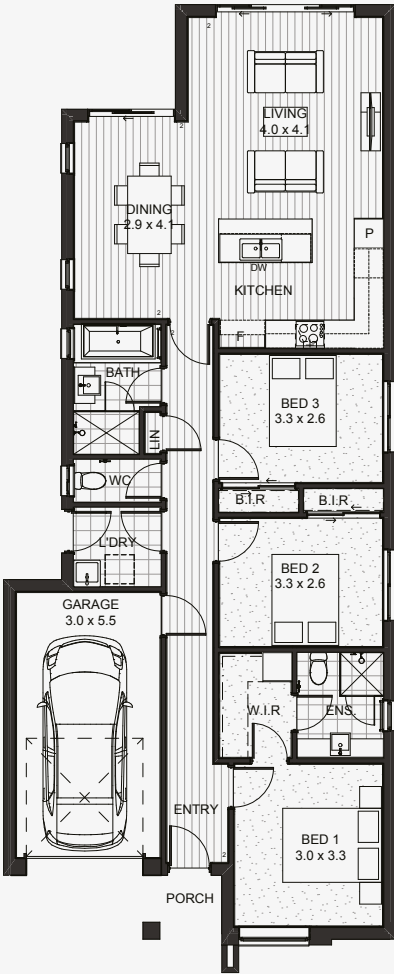
Architecturally designed to be compact yet spacious, the Amber offers fantastic value for first home buyers.

A bright, airy open plan living area and 3 bedrooms with ensuite and walk-in robe to main, in a full turnkey package make the Amber a smart and rewarding way to start a new life at Seasons, Mount Barker.



AREA	MEASUREMENT (M ²)
LIVING	111.97
PORCH	2.15
GARAGE	19.42
TOTAL AREA	133.54
LAND SIZE	250.00

Situated by the local waterway, backing on to Council reserve.



Smart Buy Checklist

At Seasons we do things differently by building homes spec'd for living. Our standard spec sheet reads like an upgrade list.

Our homes truly are "Turnkey" with a price that is fixed at the start. Moving house can be a stressful time, the last thing you need is surprise costs, or to move in to your new home only to find out what you thought was included... is not.

At Seasons the only thing you need to organise is the house-warming party! With all our homes built by Rivergum Homes, you can trust that we've got the rest covered.



	Seasons Standard	Others Standard
Ducted reverse-cycle airconditioning	✓	✗
Stone benchtops	✓	✗
2.7m ceilings	✓	✗
LED downlights	✓	✗
Stainless steel appliances (Westinghouse)	✓	✗
Fully Landscaped to front and rear	✓	✗
Remote Electric Garage Door	✓	✗
Fencing to sides and rear (design specific)	✓	✗
Professionally designed interior selections to choose from	✓	✗
FIXED BUILD TIMES	✓	✗
FIXED PRICE CONTRACTS	✓	✗

FAQS

1 What does it mean to buy a house and land package at Seasons?

A house and land package means you're buying both a piece of land and also a house to build on it at the same time.

There are two contracts involved, one for the land and one for the house, and both are handles by your Seasons sales representative. With these packages, you first settle on the land and then make 6 progress payments as your home gets built. The best thing about this setup? You only pay stamp duty on the land price, not the whole price. So if, for example the package is \$460,000 which is a combination of \$200,000 for the land and \$260,000 for the build, you only pay stamp duty on the \$200,000 – which in this case would save you over \$12,000 in fees.

2 Do I need to get council approval?

No! We handle that for you. We organise the building approvals well before you even have to pay for the land, which means that once you settle on your block of land, we start building within a few short weeks. No more lengthy delays waiting for approvals while you're paying for a mortgage on an empty block! Once you settle on the land we guarantee a start date and lock in a finish date, and all your approvals in between are handled by us.

3 A friend built and they had to pay a \$30,000 variation because their block of land needed more work than the builder thought, so they charged a big fee for the footings. Will that happen to me?

Definitely not. We have fixed price contracts that lock in the price at the start, and we have agreed in your contract to not pass on any variations on footings. Before you settle on the land we have done all the research to make sure your land is right. You will never have to worry about footing costs.

4 How much deposit do I need?

The deposits we need can vary from project to project depending on a number of things, so it is decided case by case. However, another great thing about our house and land packages is you only need to pay for a deposit on the land, not on the build.

5 Can I choose my fittings and other specs, like lights and appliances?

The competitive pricing, we achieve in our homes is in part due to our ability to buy 100s of fixtures, fittings and appliances from the same suppliers, which means you get to personally leverage off the strength of our buying power, while still getting the enduring quality of the products we choose. In general, its best to stick with the features we've included in our homes, as they already have the built-in smarts you deserve.

9 Do I have to pay strata or body corporate fees?

No! Our house and land packages are Torrens Title, 100% stand-alone homes with no shared walls, no shared roofs, and no shared plumbing. Although they're built in a group, they all face onto a public road and have no common infrastructure whatsoever.

This means they're like any normal home, entirely yours with no community or strata fees to pay at all.

10 I've heard the first home owners grant has finished on existing homes. Can I still get it on new constructions like this?

Absolutely! At time of writing, the First Home Owners Grant of \$15,000 still applies to new constructions. For more information on the grant visit www.revenuesa.sa.gov.au/grants-and-concessions/first-home-owners

13 I am interested in purchasing, so what's next?

Congratulations! The best thing to do is email or call your Seasons Sales representative and ask for an offer form. This gives us all the details we need to get the contracts ready, and officially puts your chosen home on hold for a limited time until we meet you for contract signing.

During this meeting we can help you with finance option if you need, and even run through all the colour options at the same time. We're proud of what we do, and we want you to be proud of where you live. Thank you for trusting us with your big decision.

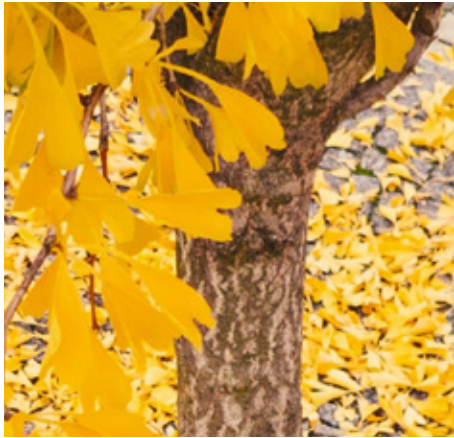
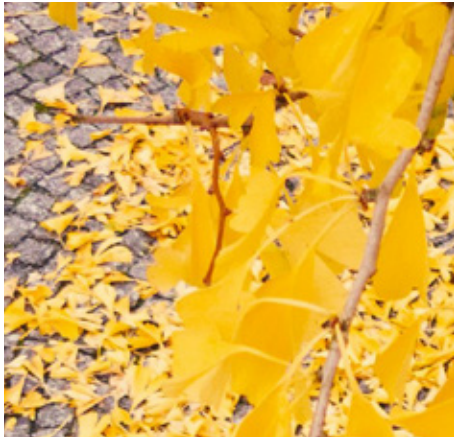
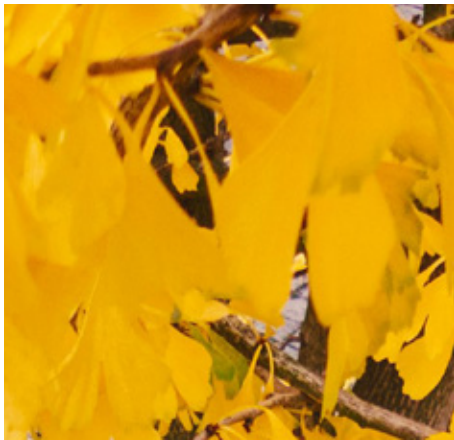
14 Can I choose my colours?

With 100's of little colour cards littering your coffee table, trying to work out what goes with what can be quite stressful.

This is where we make it easy! The external colours have been designed by our architects to suit the façade of your chosen home. This has formed part of the council approval process, but inside you have some great choices!

We have professionally designed three colour boards, expertly put together by our interior design team.

There is bound to be a colour scheme that you will fall in love with. In addition you can trust that everything within your chosen scheme will work and flow seamlessly, turning your house into a home.



SEASONS° *Live in the heart of Mount Barker*

Whilst all care has been taken in the preparation of this material, no responsibility is taken for errors or omissions and details may be subject to change. Intending purchasers should not rely on statements or representations and are advised to make their own enquiries to satisfy themselves in all respects. Artwork, images and colours are impressions only and are not to be relied upon as a definitive reference. Prices and availability subject to change without notice. Builder Licence GL11368. RLA277986. January 2019.

rivergum
homes